

RAM DPG High Pressure Air Compressors

Available in 25-30 HP--38 CFM or 75 HP-92 CFM machines

RAM's Model RHP-37-75BD Four Stage Water-cooled Compressor – 92 SCFM @ 2,000 to 3,600 PSI at 1800 RPM, driven by a 75 HP - 460V/60Hz/3 phase TEFC motor complete with the following accessories:

- Inlet filter
- Intercoolers and after-cooler
- Inter-stage and final condensate separators
- Inter-stage and final safety relief valves
- Condensate separators
- Discharge check valve
- Pressure maintaining valve
- Gauge panel with hour-meter
- Emergency stop button
- Auto start/stop air pressure switch with indicator light
- Low oil pressure switch with warning light
- High temperature switch with warning light
- Low water flow switch with warning light
- Automatic condensate drain system

Also The Compressor can includes Selected Options:

- Water control shutoff valve
- Thermostatic control valve
- Magnetic starter and control transformer mounted in a NEMA 4X box (Control can also be set up for remote mounting to bulkhead)
- Offshore Coating on Structural Steel Skid, Compressor & Dryer
- Air Inlet Reducing Station to allow for Rig Air feed
- Demister Condensate Collection System



Individual Generator & Booster Skid Rated Performance:

Flow Capacity	92 ACFM
Pressure	2,000 to 3,600 PSIG
Ambient Temperature	100 F
Motor Horsepower	75
Motor Speed:	1,800 RPM
Cooling Water Flow:	15 GPM
Unit dimensions:	112" L x 72" W x 90"

Cooling System for RAM HP-Air Compressor

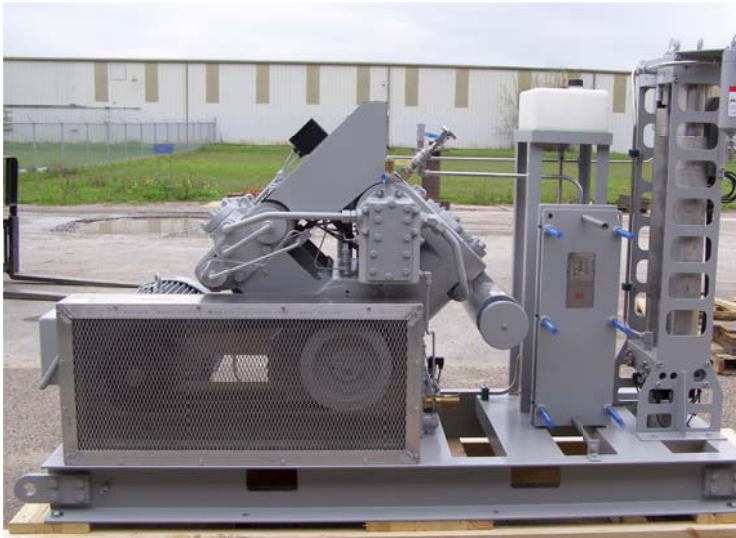
Fresh water cooling water systems for a single Air Compressor. Includes Pump, Surge tank and Heat Exchanger.

Seawater Cooler module, water cooled intercoolers and aftercooler for 15°F CTD utilizing salt water.

Options for either Seawater Shell & Tube or Titanium Plate Cooler designed for 90°F sea water cooling.

Air Dryer:

Desiccant Regenerative Twin Tower with Pre-Filters and AfterFilters, mounted integral to Compressor Skid. Dryer Rated for 100 CFM at 3,000 to 3,600 PSIG.



Product Driver & Model Code Definition:

Example Model: RHP 5437-BD-75 SWSPC-DAD-100-EC

<u>RHP</u>	<u>5437</u>	<u>BD</u>	<u>75</u>	<u>SWSPC</u>	<u>DAD-100</u>	<u>EC</u>
RAM DPG	Comp-air	Compressor	Motor HP	Cooling System	Desiccant	Product Class:
High Pressure	Air End	Drive	25HP	Medium:	Refrigerated	Standard = Left Blank
Air	/Frame	Configuration	30HP	AC = Air Cooled	Air Flow at 2,400 PSI	Application Specific
Compressor	Designation	BD = Belt Drive	60HP	FW= Fresh Water	75 CFM	Configuration = EC
		DD = Direct Drive	75 HP	SW = Sea Water	100 CFM	EC = Engineered Compressor
			Voltage is 460v unless other wise	Configuration:	125 CFM	
				Copper Nickel Shell & tube	150 CFM	
				Stainless Steel Plate	250 CFM	
				Titanium Plate		

