

# HUR-ML "MAN-LIFTER", Model: HUR30ML-20AM1G

Utility: 3,000 lbs. (1,360 kg)/Personnel: 3,000 Lbs. (1,360kg) Capacity



## RAM LIGHTNING-ML

*Gain Air Superiority with RAM's "Air Power" Series Winches.*

**AIR POWER Series, Frame I: 3,000 to 6,000 lbs. Capacity Range**

Designed to Out Perform Any Generation of Air Winch now on the market today.

Rugged, Heavy Duty Construction Meets or Exceeds American ANSI / ASME B30.7 Winch Standards.

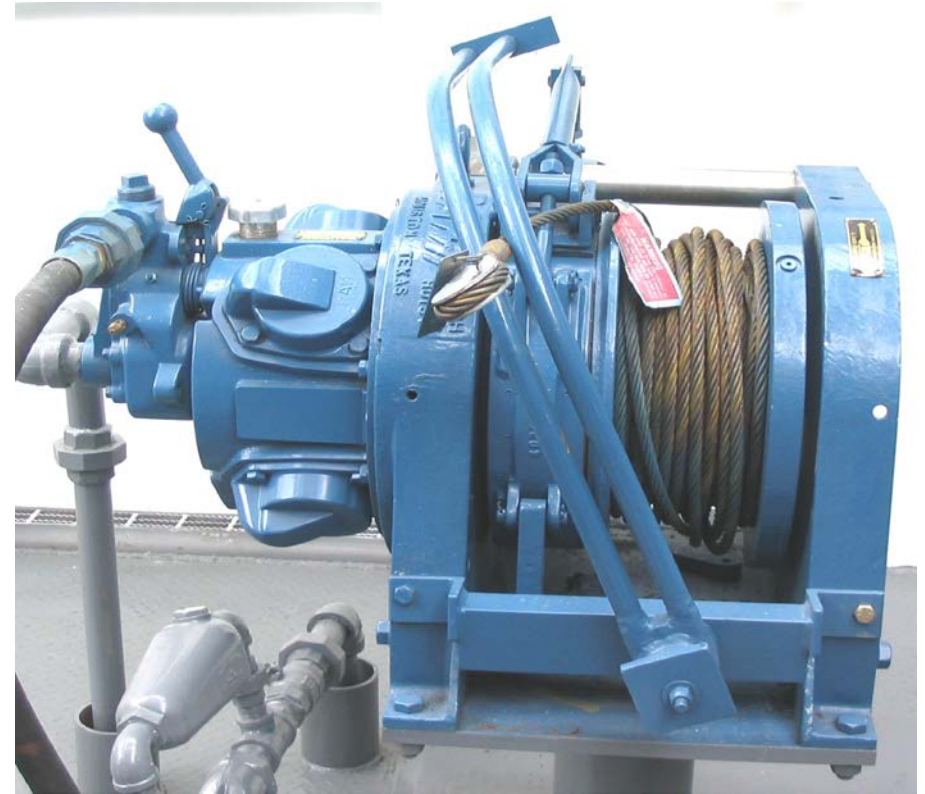
Design Reviewed by ABS & DNV, this winch offers Safety, Reliability Performance & Value.

Easy to work on and less expensive to maintain, the RAM HUR30 air winch uses the Classic "HU", Four Cylinder Air Motor that other charge Extra money for as an option.

*Manual brake is standard*

*Automatic Brake is optional*

*Available in standard utility and dual rated, utility / personnel models.*



### Specifications: Performance is based on 90 psi (6.3 bar) air inlet pressure with motor running

Model	Line Pull at Rated Layer		Line Speed at Rated Layer		Drum Length	Avg. Air Consumption		Max. stall 1 <sup>st</sup> layer		Inlet Size	Shipping Weight	
	lbs.	kg	ft./min	m/min	in	SCFM	m <sup>3</sup> /min	lbs.	kg	NPT	lbs.	kg
HUR30ML-20AM1G	3,000	1,360	106	32	20	210	5.9	6,800	3,085	1 ¼	1,250	567
<b>Personnel Rating</b>	<b>3,000</b>	<b>1,360</b>										

Drum Storage	Wire Rope Diameter	Drum Length	Drum Storage
	in	in	ft.
HUR30ML-08	1/2	6	276
HUR30ML-10		10	472
HUR30ML-12		12	577
HUR30ML-14		14	682
HUR30ML-18		18	879
HUR30ML-20		20	984
HUR30ML-24		24	1,181