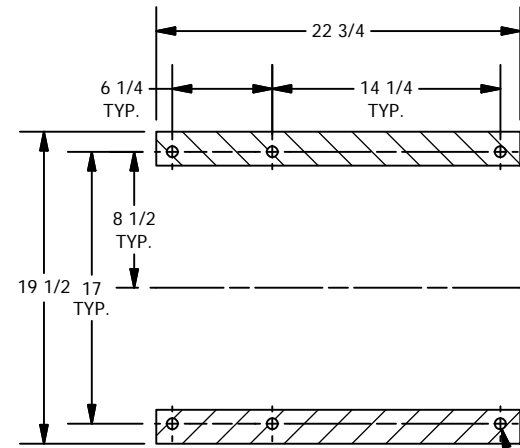


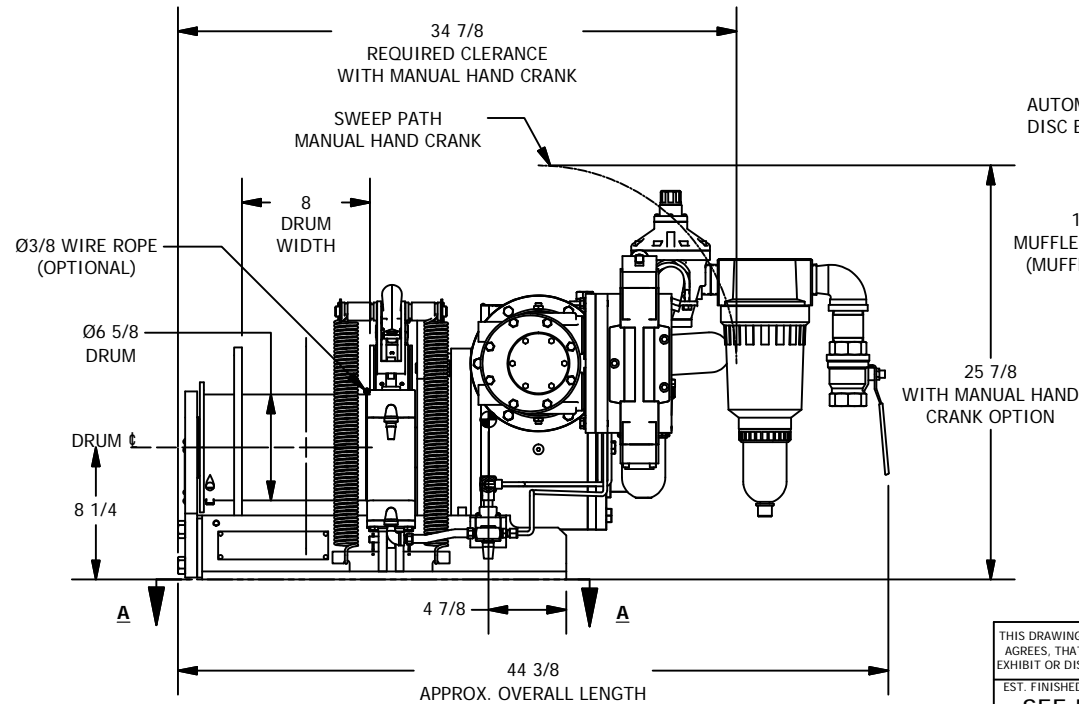
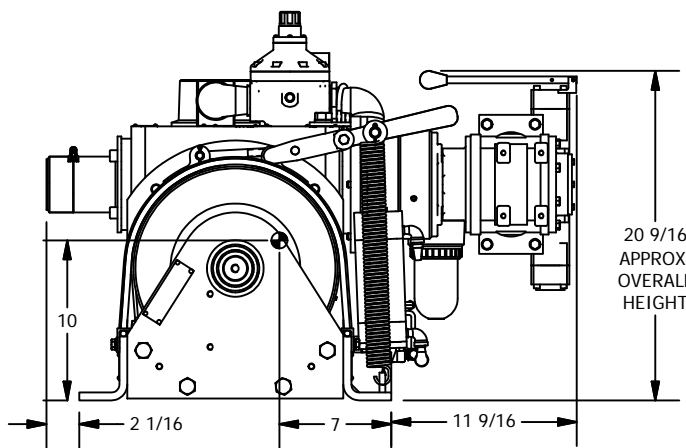
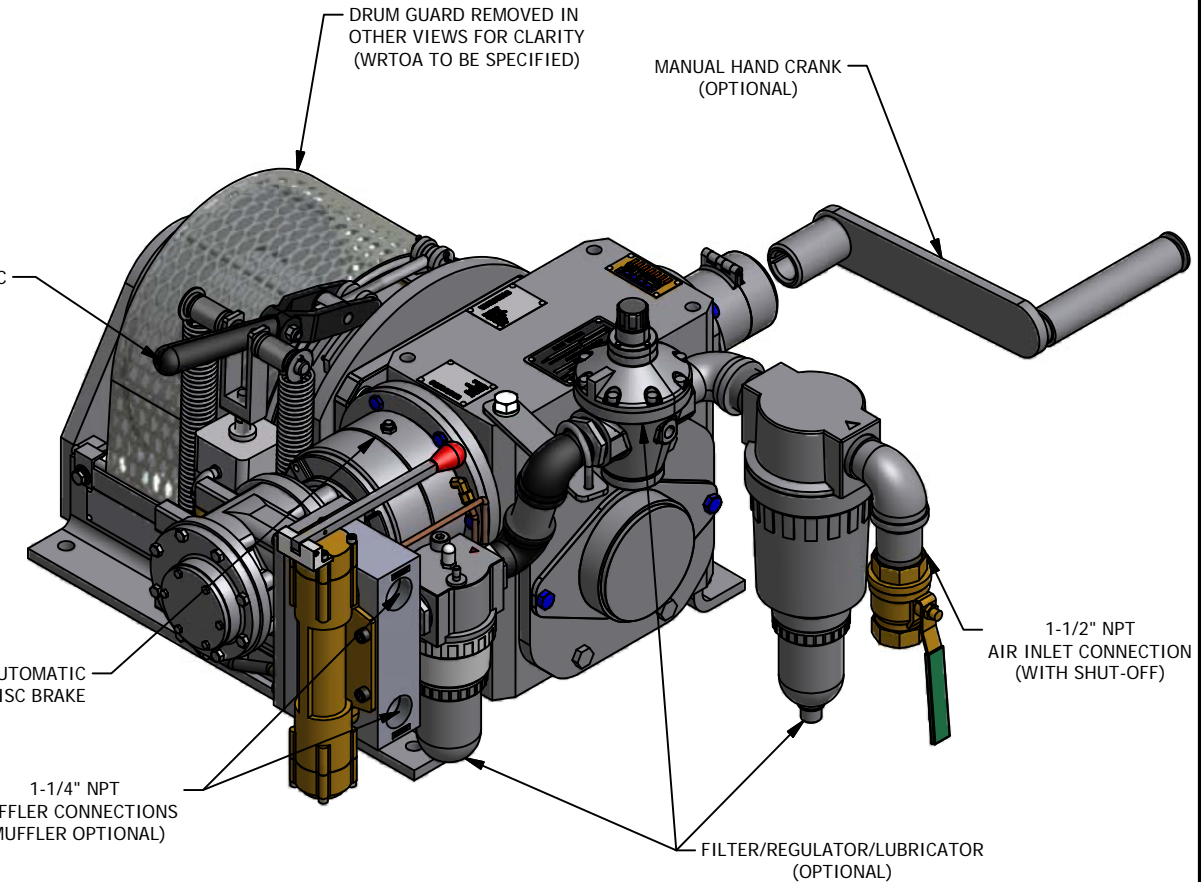
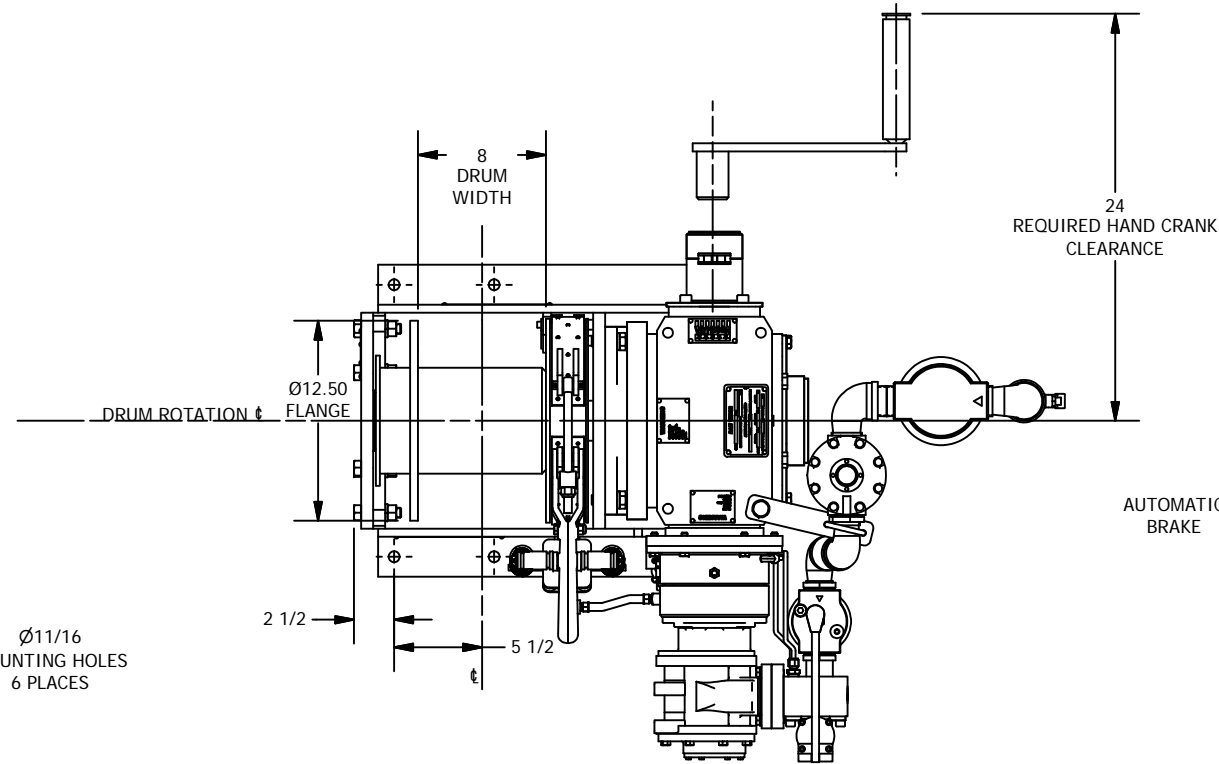
NOTES:
 1. APPROX. WEIGHT: 650 LBS. (W/O WIRE ROPE)

| REVISION HISTORY | | | |
|------------------|-----------------|----------|-----|
| REV | DESCRIPTION | DATE | ECN |
| 0 | INITIAL RELEASE | 10/23/12 | - |



SECTION A-A - FOOTPRINT
 SCALE 1/12

Ø11/16
 MOUNTING HOLES
 6 PLACES



THIS DRAWING IS THE PROPERTY OF RAM ITC. THE DESIGN AND DATA SHOWN INCLUDES PROPRIETARY INFORMATION THAT DESCRIBES RAM ITC. PRODUCTS. THE BORROWER BY RECEIPT AND RETENTION OF THE DRAWING AGREES, THAT EXCEPT AS EXPRESSLY AUTHORIZED IN WRITING BY RAM ITC., IT WILL (1) ONLY USE THE DRAWING OR THE DESIGN AND DATA SHOWN FOR THE PURPOSE INTENDED BY RAM ITC.; (2) NOT LOAN, REPRODUCE, EXHIBIT OR DISTRIBUTE THE DRAWING OR ANY COPY OF THE DESIGN OR DATA SHOWN FOR USE BY OTHER THAN RAM ITC., AND (3) UPON DEMAND RETURN THE DRAWING, ALL COPIES AND ALL MATERIAL COPIES THEREFROM.

| | | | | |
|-----------------------|--------------|---------------------------------------|---|---------------------|
| EST. FINISHED WT. LBS | SEE NOTE 1 | | UNLESS OTHERWISE SPECIFIED: ALL DIMENSIONS ARE IN INCHES AND ALL TOLERANCES ARE AS STATED | |
| ACTUAL WT. LBS | | | ANGLES: ±0.5° | DIMENSIONS: |
| ORIGINAL JOB NO: | | SURFACE FINISH: | X.X ±0.06 | |
| | | ON ALL MACHINED SURFACES | X.XX ±0.015 | |
| | | | X.XXX ±0.005 | |
| | | | FRACTION ±1/16 | |
| | | SURFACE FEATURES: MACHINED PARTS ONLY | | |
| | | T.I.R. \sqrt{R} .005 | PERPENDICULAR \perp .015 | |
| | | FLATNESS \sqrt{R} 0.010 | PARALLEL \parallel .015 | |
| | | BREAK ALL SHARP EDGES | | |
| | | DWN: E. SOESANTO | 10/19/2012 | |
| | | CKD: M. WEHMEYER | 10/19/2012 | |
| NA | ML1550-8AK1G | ENG: M. WEHMEYER | 10/19/2012 | SIZE: B |
| NEXT ASSEMBLY | MODEL NO. | APVD: M. WEHMEYER | 10/19/2012 | DWG NUMBER: S001777 |
| | | | | REV: 0 |
| | | | | SCALE: NTS |
| | | | | SH: 1 OF 1 |

RAM WINCH
 HOIST

14603 CHRISMAN
 HOUSTON, TX 77039

TITLE: GENERAL ARRANGEMENT,
 ML1550-8AK1G